

Keyless Combination Lock

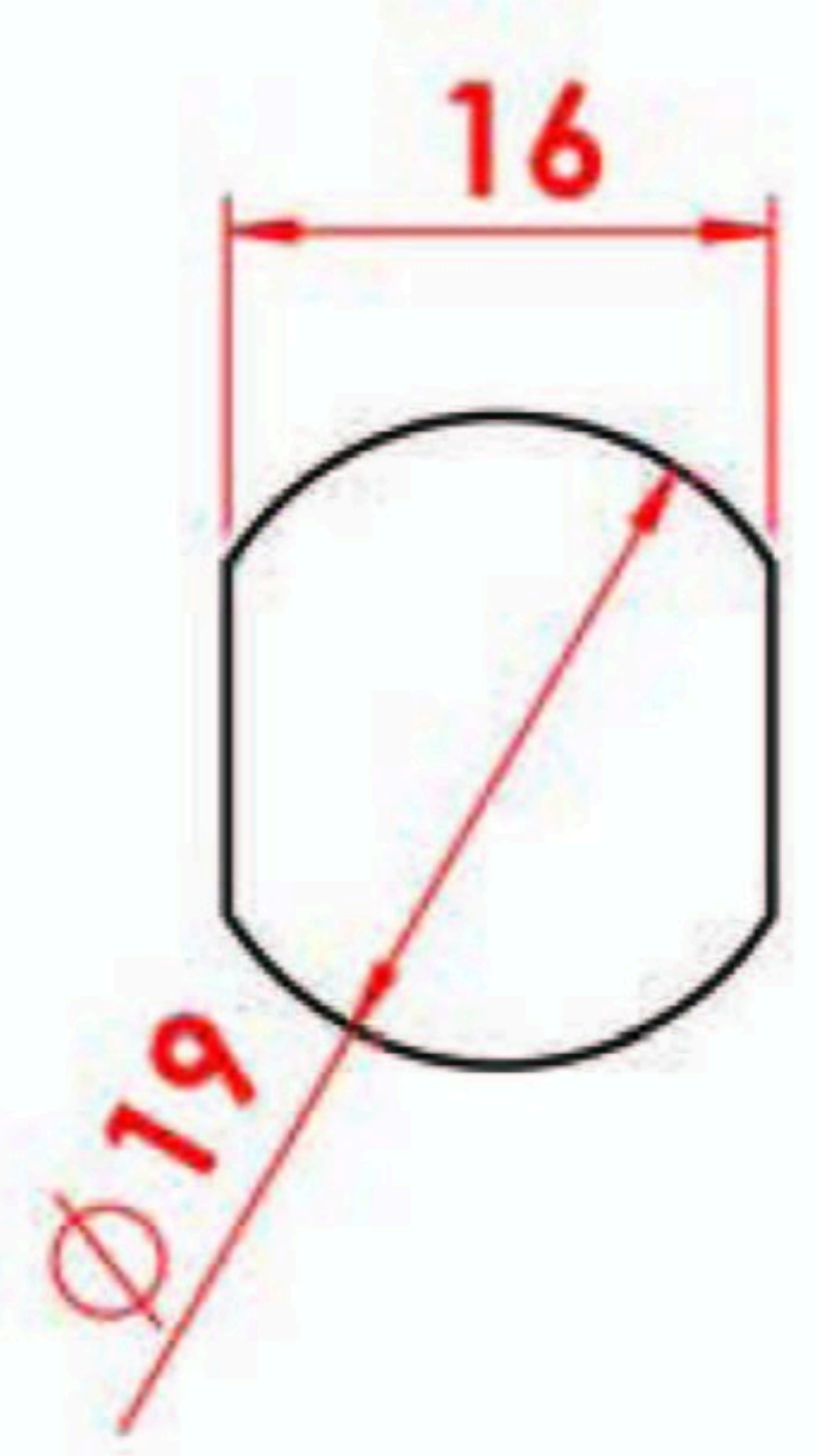
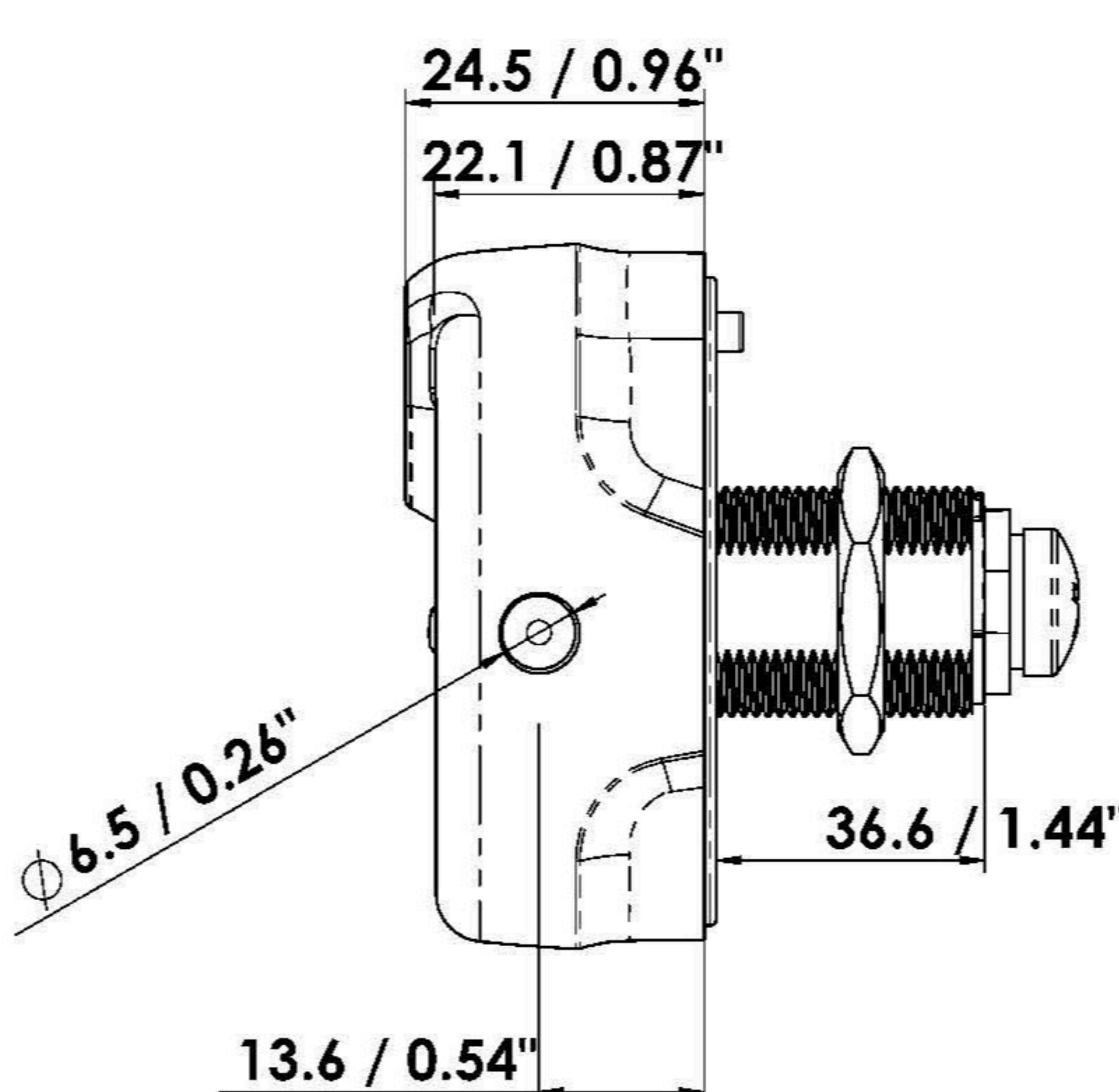
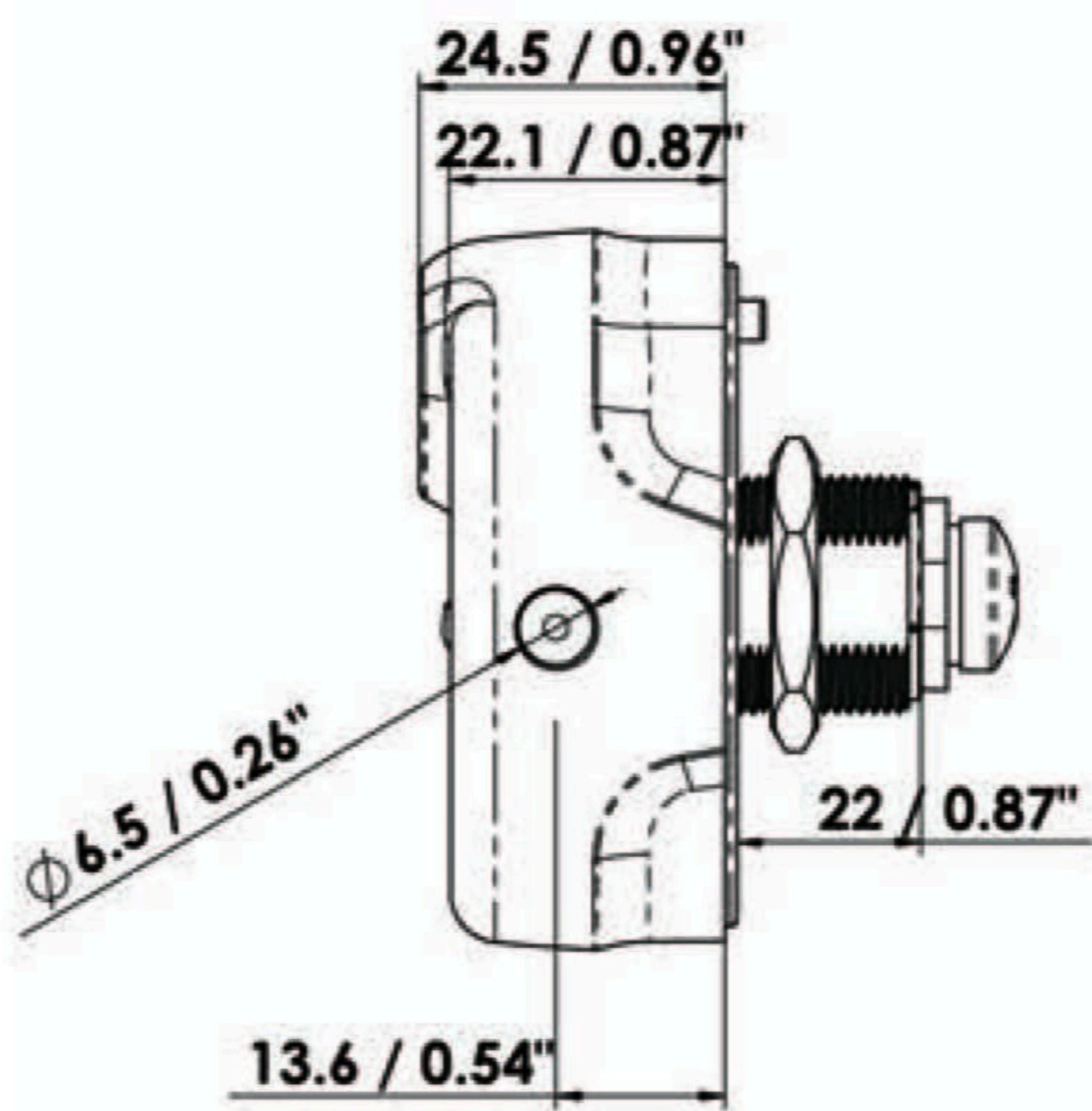
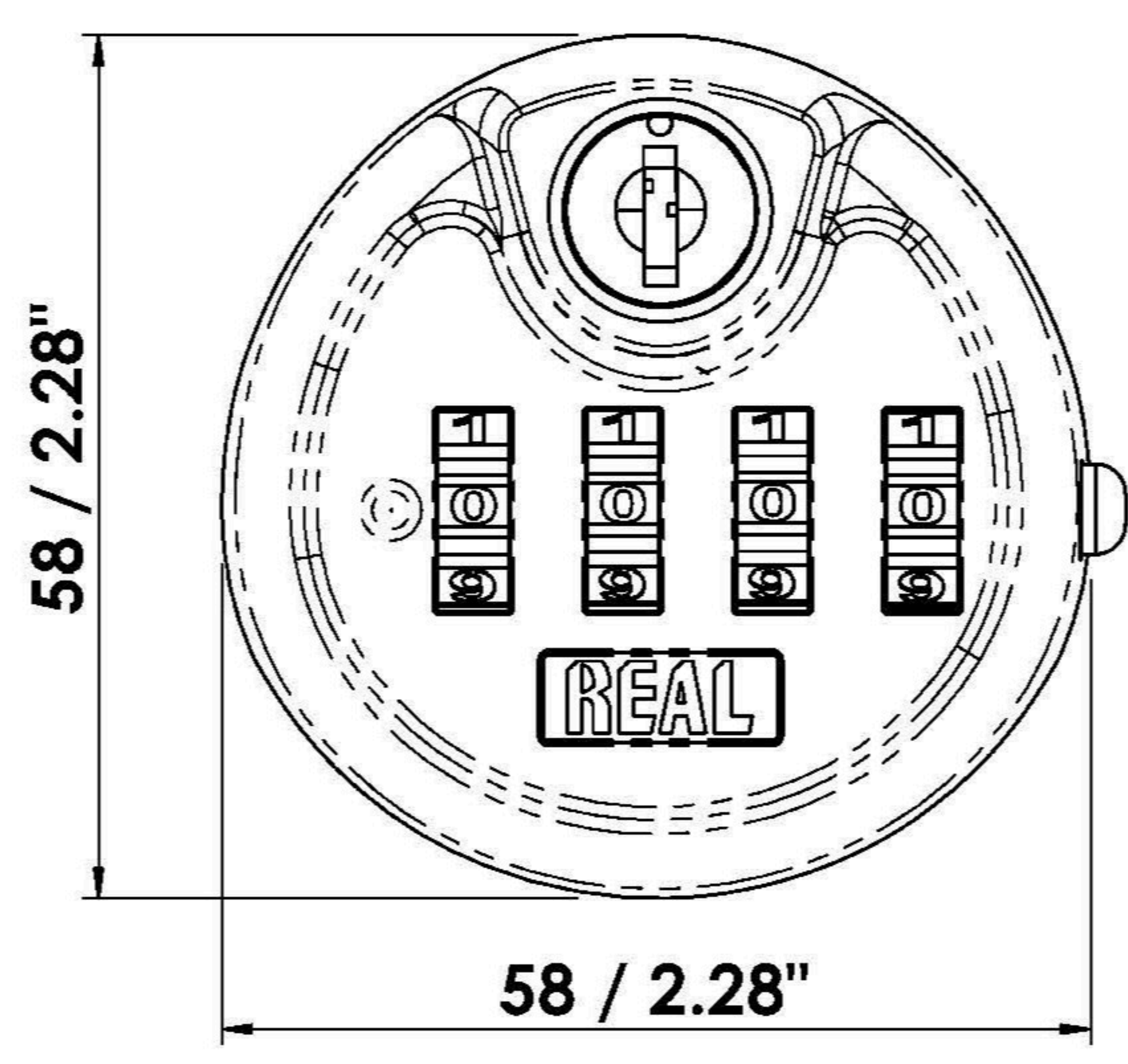
RL-10347



- Material: Zinc alloy lock panel.
- Dual Mechanism : With override key for emergency opening.
- Rotate one circle to set new numbers.
- Door thickness : 0.04"~1.14" (1~29mm)
- Different colors are available.
- Suitable for locker, cabinet, tooling box, mail box or any storage box.
- User can set up their own number: 10,000 combination
- No handle or pull required, built-in knob to open and close locker.
- Anti-peeping
- Fitting for the existing hole of cam lock(diameter:16mm /19mm), easy for installation and replacement for standard cam lock.

Specification		
Item NO.	Code Reset	Suitable for Door thickness
RL-10347-02	36.6mm	1~29mm
RL-10347-04	22mm	1~13mm

unit : mm / inch



Mounting Hole