

VEHICLE LOCK

KING PIN LOCK



RL-9156(A)

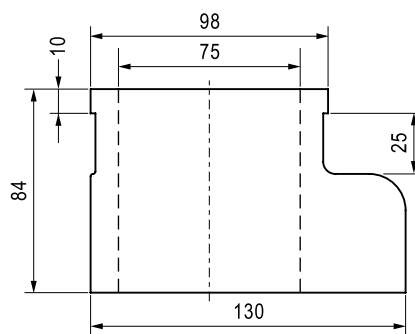
- Aluminum lock housing.
- Finish : Powder coating.(different colors are available)
- One-piece construction design.
- Master key is available upon request.
- Red belt for warning purpose.
- Best protection for fifth wheel of container or trailer.



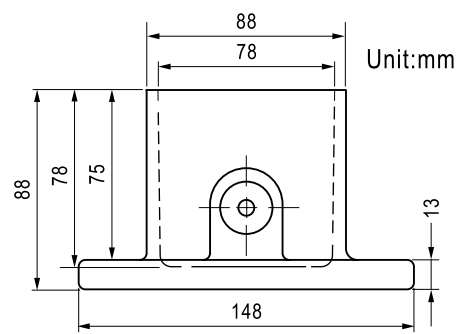
RL-9156(C)

- Material : Steel with orange powder coating.
- Cylinder : Detained disc cylinder. (Push-in Lock type)
- Key : Master key, Key Alike, Key Different is available upon request.
- One-piece construction design.
- Millions of key combinations.
- Best protection for fifth wheel of container or trailer.
- Easy to carry with the handle.

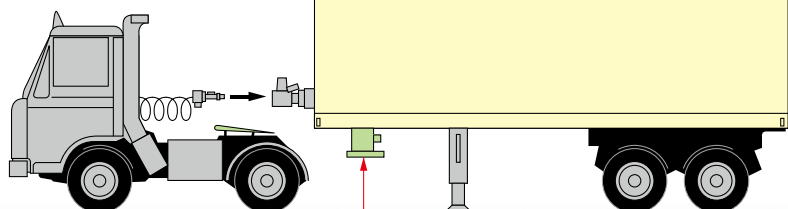
RL-9156(A)



RL-9156(C)



Item no.	Housing material
RL-9156(A)	Aluminum
RL-9156(C)	Steel



RL-9156(A) White RL-9156(A) Silver